

Terra-Stone

Insitu Terrazzo Screeds



SLIMCRETE

SELF LEVELING TERRAZZO FLOORING PLACED ON SITE FOR INTERNAL FLOORS

INTRODUCTION

We are able to offer our NEW specially formulated, self-levelling polished SlimCrete mixture for application to fabricate slim +/-10mm thick, beautiful seamless cast and hard wearing floors. SlimCrete is supplied premixed and packed in 40kg bags. The selected aggregates are hard wearing and ensures the floor, once polished, is suitable as a high foot traffic commercial floor. It is available in 5 standard colours. Custom made colours can be manufactured at a small surcharge. Ideal applications are retail trading floors, supermarkets, warehousing floors, walkways in schools, universities and all high foot traffic areas and domestic areas.

The substrate concrete must be at least 6 weeks old.

Slimcrete is ideally placed at 12mm and polished down to +/-10mm. The self-levelling properties make this an easy application to cast. The selected fine aggregate not only provides a hard wearing surface but also facilitates a quick grinding process. The preparation involves firmly screwing right angled aluminium strips with a height of 12mm to a hard, fully cured, slightly rough concrete base in 1,75m x 1,75m or maximum 3m x 3m square panels. Panels must coincide directly above any saw cut joints in the concrete slab below. Once the aluminium strips are firmly screwed to the floor at ± 600mm intervals, the panels are filled with SlimCrete and trowelled level to the top of the aluminium or brass strip.

The area must then be allowed to cure by covering it with plastic and keeping it wet for +/-3-5 days, depending on the season. On about the 3rd or 4th day, polishing takes place, using a sequential range of floor grinding abrasives, attached to a Terrazzo or marble floor grinder. (All grinding machines and abrasive consumables available from Union Tiles (Diastar division).

The original 12mm cast floor should finally polish to a thickness of +/-10mm once complete.

TRIAL PANEL

A small sample panel (+/-0.5m²) must be undertaken of the new batch supplied and is to be placed, cured, ground, and polished and sealed, for the client's approval! This sample must be done and approved before all the mixture is placed, using the product batch ordered and supplied. The supplied batch may differ from the original sample, due to natural raw material variations and batch differences which are to be expected. Hence the necessity for the client's approval of the trial sample panel, before proceeding! No disputes on the colour or aggregate type will be considered if this trial panel is not complied with.

GENERAL MAINTENANCE

The floor should be cleaned with a mechanical floor scrubber on a regular basis depending on foot traffic for best results, etc. Give preference to high traffic areas. Rotary polishers / scrubbers, walk-behinds, ride-ons, etc., must be used (depending on area size). Best results are achieved by removal of the dirty water with a wet and dry vacuum and the use of red 3m pads shown on page 34. Neutral detergents such as (SQT Natural Stone Detergent) or other similar approved neutral soap products must be used at all times. No acid or ammonia based cleaners!

The wrong cleaning detergents will damage the Terrazzo product or sealant. The cleaning detergents must be free from ammonia and acids. (Ammonia will strip the acrylic sealer exposing the virgin Terrazzo to potential damage and staining). Terrazzo is a cementitious product and is highly

susceptible to acid damage. Never use acid based cleaners. **SQT Natural Stone Detergent** is the approved neutral detergent and degreaser for the Slimcrete product.

PRODUCT GUARANTEE

A one year product guarantee is supplied, provided all installation instruction and maintenance procedures are adhered to. The guarantee is strictly limited to the value of the Slimcrete product supplied and invoiced and does not include any consequential or inconsequential damages, labour or other costs.

For further details request our Slimcrete technical data sheet.



SCREEDCRETE

TRADITIONAL INSITU POLISHED TERRAZZO, FOR INTERNAL FLOORING

INTRODUCTION

We are able to offer our specially formulated, polished “Screedcrete” mixture in several exciting colours, for application to fabricate beautiful seamless and hard wearing floors. Screedcrete is supplied premixed and packed in 40kg bags.

In brief:

Our new polished “Screedcrete” mix designs are offered in a diverse colour range, encompassing 12 standard colours. (Special colours can be made to order). The thickness of application ranges from a minimum of 16mm, 19/25mm or up to 30mm in thickness. The preparation involves firmly screwing right angled aluminium or brass angle with a height of 16/19/25/30mm to a hard 6 weeks cured, slightly rough concrete base, in 1m x 1m or maximum 1.2m x 1.2m square panels. These need to coincide directly

above any substrate saw cut joints and should be placed around any columns in a diamond shape. Once the aluminium strips are firmly screwed to the floor at ± 600mm intervals, the panels are filled using our Screedcrete and trowelled level to the top of the aluminium or brass strip.

The area must then be allowed to cure by covering it with plastic and keeping it wet for 4-5 days. On about the 3rd or 4th day, polishing takes place, using a range of floor grinding abrasive pads attached to a Terrazzo or marble floor grinder. (All grinding pads and machines available from Union Tiles).

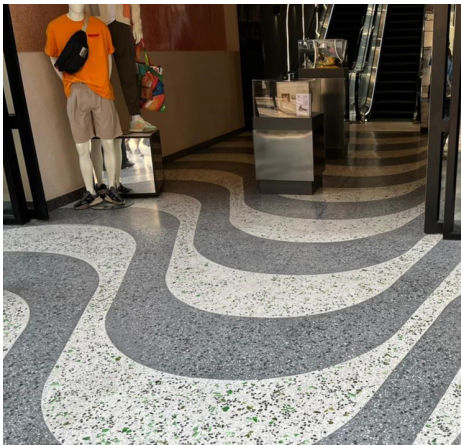
“Sample Panel.”

A small sample panel must be undertaken of the new batch supplied and is to be placed, cured, ground, and polished and sealed, for the client’s approval! This sample must be done before all the mixture is placed using the product batch ordered and supplied. The supplied batch may differ from the original sample, due to natural raw material variations and batch differences which are to be expected. Hence the necessity for the client’s approval, before proceeding!

Contact Union Tiles factory for application training on Screedcrete.

EXAMPLES OF SEAMLESS “SCREEDCRETE” FLOORS

Different colours can be used within the dividing aluminium sections.



Egg Retail Stone outside Rosebank Mall (JHB).

SCREEDCRETE SCREED THICKNESS	WATER PER 40KG TERRAZZO MIXTURE	QUANTITY OF SCREEDCRETE/m ²	ALUMINIUM RIGHT ANGLE SIZE PER PANEL	QUANTITY OF ALUMINIUM REQUIRED PER M ²	MAXIMUM PANEL SIZE	SEEDING STONE / AGGREGATE	MATCHING FILLER GROUT	UFT BONDING LIQUID USED FOR BOTH PRIMER COAT AND GROUTING COAT.	UFT CONCRETE AND STONE SEALER (THIN 3 COATS REQUIRED)
30mm	3.25l/40kg	±70kg/m ²	30x30x3mm	±2.1 Linear meter per square meter excluding any wastage.	1.4mx1.4m	500g/m ²	0.5kg/m ²	325ml/m ²	250ml/m ²
25mm	3.25l/40kg	±60kg/m ²	25x25x3mm		1.2mx1.2m	500g/m ²	0.5kg/m ²	325ml/m ²	
19mm	3.25l/40kg	±46kg/m ²	19x19x3mm		1mx1m	500g/m ²	0.5kg/m ²	325ml/m ²	
16mm	3.25l/40kg	±39kg/m ²	16x16x3mm		1mx1m	500g/m ²	0.5kg/m ²	325ml/m ²	
12mm	3.25l/40kg	±29kg/m ²	12x12x3mm		1mx1m	500g/m ²	0.5kg/m ²	325ml/m ²	

Floor designs are limitless and unique patterns are possible by using formable aluminium, to bend and create the pattern.

Request our comprehensive data sheet for application instructions.

SCREEDCRETE

EXPOSED AGGREGATE SCREED FOR NON-SLIP OUTDOOR AREAS

Screedcrete

INSITU TERRAZZO COLOURED SCREED SYSTEM, FOR EXTERNAL NON-SLIP FLOORS.

INTRODUCTION

We are able to offer our specially formulated, exposed aggregate “Screedcrete” mixture for application to fabricate beautiful hard wearing, non-slip, low maintenance outdoor floors.

Our “Screedcrete” exposed aggregate mix designs are offered in a diverse colour range, and aggregate size in either a 6mm or 13mm size, encompassing 8 standard colours. The thickness of application as a screed, ranges from a minimum 16mm up to 30mm in thickness. Natural pebbles can also be incorporated for a smoother texture (Especially suited to outdoor patios or piazza areas around swimming pools or in a sauna, where the slip-resistant features of the product are highly beneficial).

TRIAL PANEL TO BE UNDERTAKEN

The clients approval of a sample panel, of the batch supplied, is essential before doing the entire job (See page 33 Sample Panel).

SHUTTERING/ALUMINIUM STRIPS

Aluminium strips must be firmly secured to the floor at recommended panel size intervals (please

refer to step 2 for internal flooring ‘recommended thickness’s’) creating a grid. The right angled strips are fastened to the concrete floor with plastic wall plugs and countersink screws.

PREPARATION OF THE SUBSTRATE AND PLACEMENT OF SCREEDCRETE

Apply a thin primer slurry (pure matching coloured cement and UFT bonding liquid mixed to a creamy consistency) evenly on the floor area with a builders block brush to ensure proper bonding between the floor and screed. While this slurry is still moist, apply the Screedcrete on top of the slurry and trowel it level, to the top of the strip / shuttering. It is imperative that the Screedcrete mixture be placed on top of the slurry while it remains moist (i.e. within ± 20 minutes of applying the slurry) to ensure proper bonding between the concrete substrate and “Screedcrete”. The Screedcrete should be mechanically mixed using only ± 13 litres water per 160kg of screedcrete (mixture ie 4 x 40kg bags). Place alternate panels to allow ease of application. After initial set $\pm 1-2$ hours after trowelling (trial an area) use a fine wire bristled brush and hand brush the surface to expose the surface aggregate to a “uniform depth and exposure”. All excess surface filler that is brushed loose, must be swept to a point and must

be discarded asap.

Ensure each panel is brushed out to the same depth and must be uniform in appearance. After $\pm 4-6$ hours after brushing and exposing the aggregate use small amounts of clean water and a builder’s block brush and lightly wash the surface after application. Should there be any remnants of cement residue on the exposed aggregates brush the area with a mild solution of SQT Terrazzo and Cement Cleaner a day or two later, diluted about 1-10 (1. Parts SQT to 10 parts water) or slightly stronger if necessary, to get the stone clean and thereafter rinse the area thoroughly with clean water.

The day after application, flood the newly placed panels with water to allow for proper curing/ hardening of the concrete and try to avoid drafts and direct sunlight on the panels, by covering with plastic sheeting for seven days.

SEALING - THIS IS OPTIONAL

Sealing is optional with “Screedcrete”, exposed aggregate.

A sealer enhances the colour of the natural stone and makes it easier to maintain and is usually applied approximately 7 days after installation. (once the floor moisture content is less than 5%). The area can be sealed provided it is clean and dry. Use 1-2 coats UFT Concrete and Stone Sealer, for an enhanced colour appearance. These products are available from Union Tiles and must be applied evenly with a lamb’s wool roller. (Allow approximately 20 minutes drying, time between coats). The sealer may need to be reapplied every $\pm 4-5$ years depending on foot traffic and weather conditions and exposure to sunlight.

SUMMARY

Refer to our “technical data sheet” for more information. Screedcrete is on our website, for all the applicator steps.

Examples of Exposed Aggregate Screedcrete



Mauritius hotel external walkways.



POLISHING MACHINERY AND ACCESSORIES REQUIRED

Polishing Machinery

All available from Union Tiles

FOR MORE DETAILS ON THE FULL RANGE VISIT WWW.DIASTAR.CO.ZA



Concrete Mixing drum: Portable electric Motor 220 volt. Mixes 4x40kg with 13 liters of water.



Micro fibre sealer applicator. For quick and thin uniform application of our sealer, For smooth floors. (Use a lamb wool roller for textured floors).



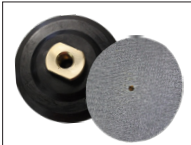
Wet and Dry 60L Industrial Vacuum Cleaner with 2 motors for quick and efficient removal of grinding residue.

Base Grinding Plate with velcro

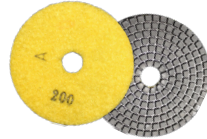


Versatile Light Duty and economically priced Polishing, Grinding and Scrubbing Machine for floors 220V 1.8kw | Model DS-1175B. Water tank allows wet polishing, avoiding dust while polishing.

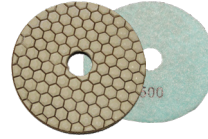
Wet Stone Polisher & Grinder for hard to reach areas or against walls and corners and for steps and risers



Velcro Flexible Backing Disc 1FLEBACDISHD100 | 100mm (M14 Thread) (To fit on hand Polisher)



Wet Flexible Polishing Pads With Velcro 1DIAPOL100WET 100mm Diameter Grit: 50, 100, 200, 400, 800, 1500, 3000

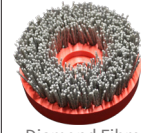


Dry Flexible Polishing Pads With Velcro 1DIAPOL100 DRY 100mm Diameter Grit: 50, 100, 200, 400, 800, 1500, 3000

Diamond Bristled Brushes
For a non slip texture



Base plate fitted with a set of wings to hold Frankfurt metal abrasives or diamond bristle brushes below:



Diamond Fibre Hand Polishing Brush 1DIAHANBRU60 **For non-slip Texturing**

Floor Maintenance Scrubbing And Buffing Pads



3M PADS
13MSTRBLAPAD (Black) For Stripping
13MSTRREDPAD (Red) For General Maintenance
13MSTRWHIPAD (White) For polishing
Fits on 1175B Machine

Brush Attachment
For cleaning and general maintenance



Carpet and scrubbing Brush Attachments 1HXGCARBRUCBA001 410mm Diameter **Fits on 1175B Machine**

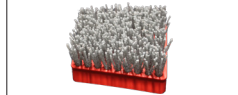


Left & right wings for modifying your own abrasive grinding block attachment system on the base plate MAPWINSTO.



Frankfurt Metal Diamond Segment 1DIAPOLEGFRAG25 Grit: 25, 40, 60, 80, 100, 120, 150, 220 (For initial heavy deep and quick grinding).

Use wings to locate and attach bristle brushes and metal diamond Frankfurt segments to the base plate



Abrasive Frankfurt Diamond Fibre Bristle Brush 1ABRFRA Grit: 60, 120, 220, 320,

90° Aluminium Dividing Strips

